



PINK LACE MARGARITA

A Star-Studded blend of Patron tequila shaken with coconut, fresh lime and Guava. AED 50.00

RUN THE WORLD

A refreshing combination of Bombay Sapphire Gin, fresh lemon, guava, black cherries chilled and topped with a delicate float of pinot noir. AED 50.00



BERRY SALAD

A spring lettuce blend tossed in balsamic vinaigrette and topped with fresh berries, crumbled goat cheese, candied almonds and toasted coconut. † AED 75.00

+ Grilled Chicken AED 18.00

+ Grilled Steak AED 25.00

+ Grilled Salmon AED 45.00



SPRING PASTA

Radiatori pasta tossed in a garlic onion cream sauce with asparagus, seasonal squash, spring peas and finished with shaved parmesan and arugula. AED 75.00

+ Grilled Chicken AED 18.00

+ Grilled Steak AED 25.00

+ Grilled Salmon AED 45.00



MAHI SANDWICH

Grilled mahi with a lemon herb butter topped with crispy shoestring onions, remoulade sauce, vine-ripened tomato and leaf lettuce on a fresh toasted bun. Served with seasoned fries. AED 80.00



COCONUT ALMOND SUNDAE

Marble pound cake served with vanilla bean ice cream, chocolate sauce, candied almonds, toasted coconut and finished with chocolate sauce. † AED 55.00

A fundraising initiative by
Al Jalila Foundation

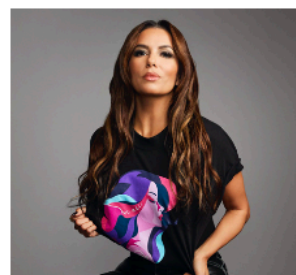
PRHCE-002415395

SCAN FOR DETAILS



#HardRockCafe | hardrockcafe.com

AVAILABLE AT OUR ROCK SHOP



We hold allergy information for all menu items, please speak to your server for further details. If you suffer from a food allergy, please ensure that your server is aware at the time of order. †Contains nuts or seeds. *These items contain (or may contain) raw or undercooked ingredients. Consuming raw or undercooked hamburgers, meats, poultry, seafood, shellfish or eggs may increase your risk of foodborne illness, especially if you have certain medical conditions. 2000 calories a day is used for general nutrition advice, but calorie needs vary. Additional nutritional information is available upon request. © 2024 Hard Rock International (USA), Inc. All rights reserved.

FR